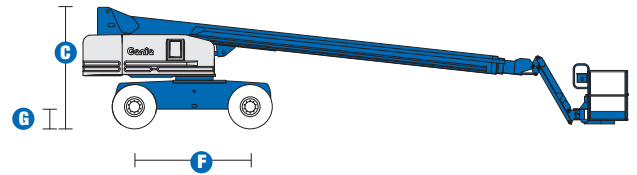
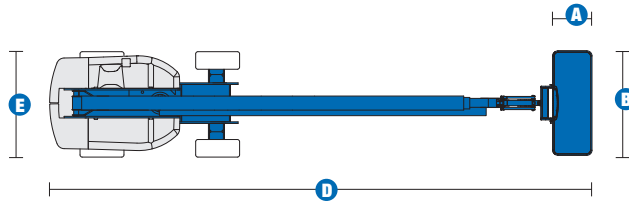
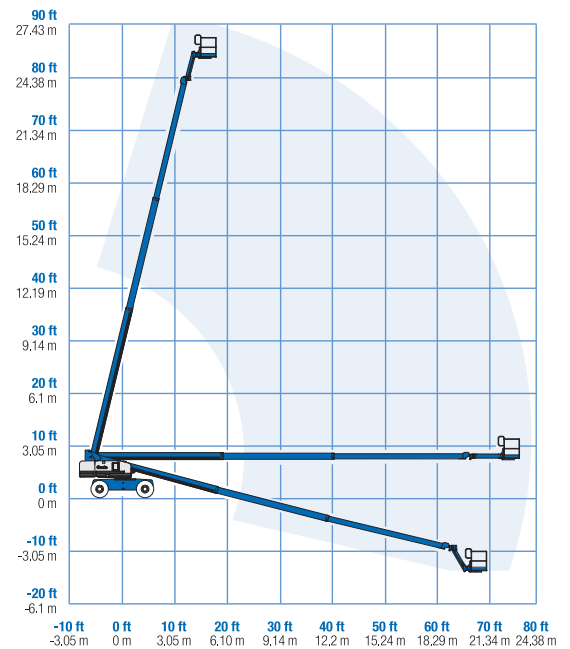


# Specifications



MODEL	S™-85	
MEASUREMENTS	Metric	US
Working height maximum*	27.90 m	91 ft
Platform height maximum	25.90 m	85 ft
Horizontal reach maximum	23.30 m	76 ft 6 in
Below ground reach	2.89 m	9 ft 6 in
A Platform length	0.91 m	3 ft
B Platform width	2.44 m	8 ft
C Height - stowed	2.80 m	9 ft 2 in
D Length - stowed	12.20 m	40 ft
Length - transport (jib tucked under)	11.60 m	38 ft
E Width	2.49 m	8 ft 2 in
F Wheelbase	2.84 m	9 ft 4 in
G Ground clearance - centre	0.33 m	13 in

## RANGE OF MOTION S™-85



PRODUCTIVITY		
Lift capacity	227 kg	500 lbs
Platform rotation	160°	160°
Vertical jib rotation	135°	135°
Turntable rotation	360° continuous	
Turntable tailswing	1.42 m	4 ft 8 in
Drive speed - stowed	5.6 km/h	3.5 mph
Drive speed - raised/extended	1.1 km/h	0.68 mph
Gradeability - stowed**	45%	45%
Turning radius - axle extended: inside	3.66 m	12 in
outside	6.55 m	21 ft 6 in
Controls	12V DC proportional	
Tyres - RT lug - Foam filled	18-625, 16ply	

POWER		
Power source	Deutz TD2011 L04i 4 cylinder turbo diesel 55 kW (74 hp)	
Auxiliary power unit	12V DC	12V DC
Hydraulic tank capacity	150 L	40 gal
Fuel tank capacity	132 L	35 gal

WEIGHT***		
	16,992 kg	37,467 lbs

STANDARDS COMPLIANCE	ANSI A92.5, CSA B354.4, CE Compliance, AS 1418.10
----------------------	---------------------------------------------------

\* The metric equivalent of working height adds 2 m to platform height. U.S. adds 6 ft to platform height.  
 \*\* Gradeability applies to driving on slopes. See operator's manual for details regarding slope ratings.  
 \*\*\* Weight will vary depending on options and/or country standards.

# Features

## STANDARD FEATURES

### MEASUREMENTS

- 27.90 m (91 ft) working height
- 23.30 m (76 ft 6 in) horizontal reach
- 227 kg (500 lbs) lift capacity

### PRODUCTIVITY

- 2.44 m (8 ft) steel platform
- 1.52 m (5 ft) jib boom with 135° working range
- 4WD
- Full-time active oscillating axle
- Self-leveling platform
- Hydraulic platform rotation
- Fully proportional Hall effect joystick controls
- Thumb rocker steer
- Drive enable
- Tilt alarm
- Motion alarm
- Descent alarm
- Horn
- Hour meter
- 360° continuous turntable rotation
- Locking low profile turntable covers
- Positive traction drive
- Two speed wheel motors
- Hydraulic oil cooler
- Alarm package
- Second battery
- Dual flashing beacons

### POWER

- 12 V DC auxiliary power
- Anti-restart engine protection
- Auto engine fault shutdown
- Engine gauge package

## OPTIONS & ACCESSORIES

### PRODUCTIVITY

- Platform swing gate
- Half mesh platform inserts with swing gate
- Platform top auxiliary rail
- Air line to platform
- Deluxe hostile environment kit
- Tool tray
- Lockable platform control box covers
- Platform work lights
- Front driving lights
- 1.83 m (6 ft) steel platform

### POWER OPTIONS

- 7 kVA hydraulic generator (240 V/50 Hz)
- Cold Weather Packages
- Diesel spark arrestor muffler
- 240 V power to platform



## Genie Australia – Toll free number 1800 788 633

**Brisbane (Head Office)**  
33 Kimberley Street  
Darra QLD 4076

**Sydney**  
74 Glendenning Road  
Glendenning NSW 2761

**Melbourne**  
374 Hammond Road  
Dandenong VIC 3175

**Perth**  
83 Bannister Road  
Canning Vale WA 6155

## Genie United States

## Distributed by:

18340 NE 76th Street  
P.O. Box 97030  
Redmond, Washington  
98073-9730

Effective Date: April, 2009. Product specifications and prices are subject to change without notice or obligation. The photographs and/or drawings in this document are for illustrative purposes only. Refer to the appropriate Operator's Manual for instructions on the proper use of this equipment. Failure to follow the appropriate Operator's Manual when using our equipment or to otherwise act irresponsibly may result in serious injury or death. The only warranty applicable to our equipment is the standard written warranty applicable to the particular product and sale and we make no other warranty, express or implied. Products and services listed may be trademarks, service marks or trade-names of Terex Corporation, Genie Industries, Inc. and/or their subsidiaries in the U.S.A. and many other countries and all rights are reserved. Terex® is a Registered Trademark of Terex Corporation in the U.S.A. and many other countries. Genie is a Registered Trademark of Genie Industries, Inc. in the U.S.A. and many other countries. Genie is a Terex Company. © 2009 Terex Corporation.